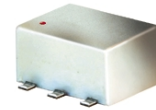


# Surface Mount Frequency Mixer

## ADE-35+ ADE-35

Level 7 (LO Power +7 dBm) 1600 to 3500 MHz



CASE STYLE: CD542

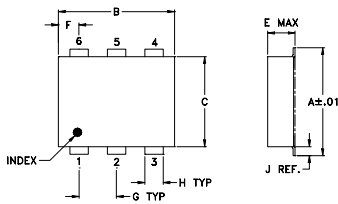
### Maximum Ratings

Operating Temperature	-40°C to 85°C
Storage Temperature	-55°C to 100°C
RF Power	50mW
IF Current	40mA

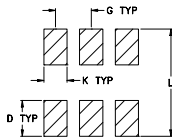
### Pin Connections

LO	6
RF	4
IF	3
GROUND	1,2,5

### Outline Drawing



### PCB Land Pattern

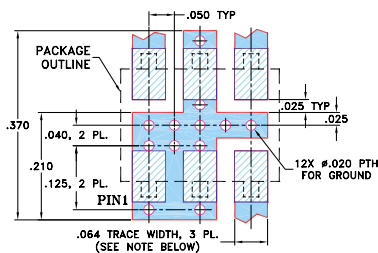


Suggested Layout,  
Tolerance to be within ±.002

### Outline Dimensions (inch/mm)

A	B	C	D	E	F	G
.272	.310	.220	.100	.112	.055	.100
6.91	7.87	5.59	2.54	2.84	1.40	2.54
H	J	K	L	wt		
.030	.026	.065	.300	grams		
0.76	0.66	1.65	7.62	0.20		

### Demo Board MCL P/N: TB-02 Suggested PCB Layout (PL-051)



- NOTES: 1. TRACE WIDTH IS SHOWN FOR ROGERS RO4350B WITH DIELECTRIC THICKNESS .030" ± .002"; COPPER: 1/2 OZ. EACH SIDE. FOR OTHER MATERIALS TRACE WIDTH MAY NEED TO BE MODIFIED.  
2. BOTTOM SIDE OF THE PCB IS CONTINUOUS GROUND PLANE.
- DENOTES PCB COPPER LAYOUT WITH SMOBC (SOLDER MASK OVER BARE COPPER)
  - DENOTES COPPER LAND PATTERN FREE OF SOLDER MASK

### Features

- low conversion loss, 6.3 dB typ.
- good isolation, 25 dB typ.
- aqueous washable
- protected by U.S. Patent 6,133,525
- low cost

### Applications

- MMDS

+ RoHS compliant in accordance with EU Directive (2002/95/EC)

The +Suffix identifies RoHS Compliance. See our web site for RoHS Compliance methodologies and qualifications.

### Electrical Specifications

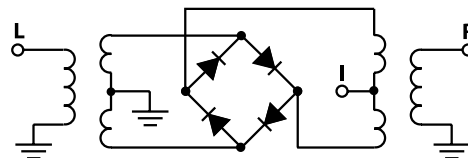
FREQUENCY (MHz)		CONVERSION LOSS (dB)			LO-RF ISOLATION (dB)		LO-IF ISOLATION (dB)		IP3 at center band (dBm)
LO/RF	IF	$\bar{X}$	$\sigma$	Max.	Typ.	Min.	Typ.	Min.	Typ.
1600-3500	DC-1500	6.3	0.50	9.8	25	16	22	12	11

1 dB COMP: +1 dBm typ.  
Phase detection, positive polarity

### Typical Performance Data

Frequency (MHz)		Conversion Loss (dB)	Isolation L-R (dB)	Isolation L-I (dB)	VSWR RF Port (:1)	VSWR LO Port (:1)
RF	LO	LO +7dBm	LO +7dBm	LO +7dBm	LO +7dBm	LO +7dBm
1600.00	1630.00	8.31	33.50	29.70	2.55	5.03
1700.00	1730.00	7.53	32.40	30.40	2.76	3.38
1800.00	1830.00	7.20	29.60	31.30	2.76	2.32
1900.00	1930.00	6.83	29.00	27.70	2.76	1.65
2000.00	2030.00	6.65	29.20	26.30	3.01	1.38
2100.00	2130.00	6.75	29.10	25.50	3.26	1.38
2200.00	2230.00	6.89	29.30	24.70	3.44	1.38
2300.00	2330.00	6.83	29.20	24.10	3.71	1.26
2400.00	2430.00	6.86	28.00	23.90	3.71	1.23
2500.00	2530.00	7.00	26.80	24.50	3.57	1.10
2600.00	2630.00	7.36	26.90	25.10	3.64	1.42
2700.00	2730.00	7.79	27.30	25.20	3.38	2.23
2800.00	2830.00	8.48	27.20	25.50	3.21	2.43
2900.00	2930.00	8.64	27.00	25.90	3.01	2.43
3000.00	3030.00	8.76	26.60	25.80	2.96	2.43
3100.00	3130.00	8.64	26.30	25.90	2.92	2.25
3200.00	3230.00	8.17	25.80	26.30	2.84	2.03
3300.00	3330.00	7.92	25.60	26.80	2.92	1.82
3400.00	3430.00	8.07	25.60	26.90	2.92	1.51
3500.00	3530.00	8.30	25.70	27.30	2.88	1.32

### Electrical Schematic



# Performance Charts

# ADE-35+ ADE-35

