

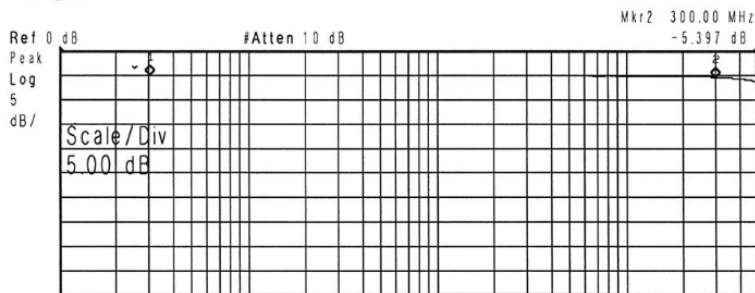
FLATPACK THREE-WAY POWER DIVIDER

SPECIFICATIONS

Frequency range	0.3 - 300 MHz
Amplitude balance	0.3 dB max.
Phase balance	3° max. (1 - 200 MHz) 5° max. (0.3 - 300 MHz)
Input power	1 W max.
Internal load dissipation	0.1 W max.
Insertion loss	0.7 dB max.
Return loss	>18 dB (1 - 300 MHz) >12 dB (0.3 - 1 MHz)
Isolation	>30 dB (1 - 200 MHz) >23 dB (0.3 - 300 MHz)

Insertion loss

Agilent 19:44:59 14 Jan 2019

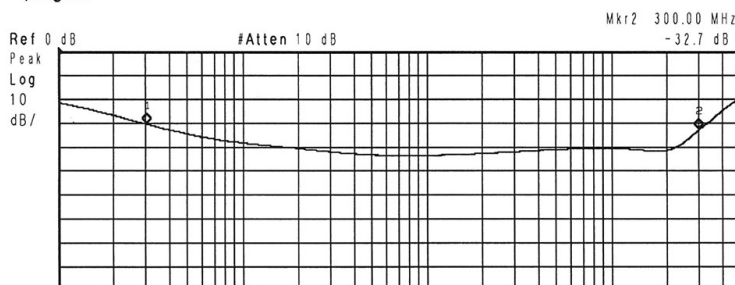


Start 100 kHz Stop 500 MHz
#Res BW 30 kHz VBW 30 kHz Sweep 1.859 s (2323 pts)

Marker	Trace	Type	X Axis	Amplitude
1	(1)	Freq	300 kHz	-5.062 dB
2	(1)	Freq	300.0 MHz	-5.397 dB

Isolation

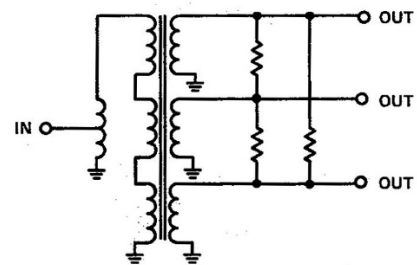
Agilent 19:42:04 14 Jan 2019



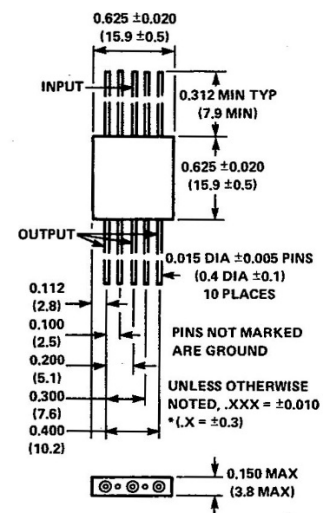
Start 100 kHz Stop 500 MHz
#Res BW 30 kHz VBW 30 kHz Sweep 1.859 s (2323 pts)

Marker	Trace	Type	X Axis	Amplitude
1	(1)	Freq	300 kHz	-30.36 dB
2	(1)	Freq	300.0 MHz	-32.7 dB

Block Diagram



Mechanical Data



WEIGHT (APPROX.): 0.1 OUNCES 2.6 GRAMS
*DIMENSIONS IN () ARE IN MM
FINISH: CASE AND LEADS - GOLD ELECTROPLATED PER MIL-G-45204 TYPE 1, CLASS 1. COVER PLATED WITH ELECTROLESS NICKEL PER MIL-C-26074B CLASS 1, 0.00012 INCH THICK.

LEADS: WELDABLE AND SOLDERABLE PER MIL-STD-1276B.